

Intelligent Connectivity for Precise Data Acquisition



What is it?

Perfectly matched components for intelligent acquisition and communication of energy data:

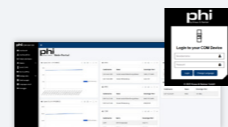
Communication Module
COM.GW.500



Measurement Modules
DAT.SA & DAT.KA



Web User Interface
Web UI



How does it work?

Your energy data is ...

- accurately recorded via the measurement module
- clearly displayed via the web user interface integrated in the communication module
- reliably transmitted to higher-level systems via the communication module

Where is it used?

- Manufacturing industry
- Building technology

... and it can be retrofitted into most machines and buildings.

When is it used?

Energy data is recorded in real time and is always accessible and verifiable.



Why is it worth it?

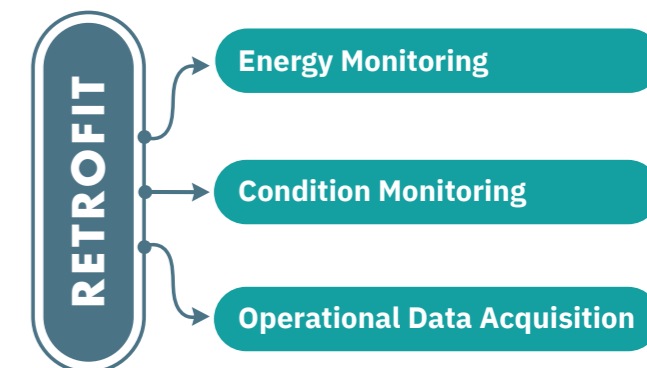
Because you need an intelligent solution that offers:

- Transparency in energy consumption
- Targeted process optimization
- More efficient energy use
- Simple installation
- Clear monitoring
- Simultaneous processing of data from up to 16 measurement modules

Energy monitoring with phi

Simple, precise and efficient. The modular components record the energy consumption of machines, systems and processes in real time, delivering valuable data to **optimize your energy efficiency**.

By identifying **energy-intensive consumers**, costs can be reduced and **sustainability goals achieved**. The solution is compatible with energy management systems according to **ISO 50001** and offers **seamless integration** into existing IT environments.



8001840



phi.krausnaimer.com

Real-time Data Acquisition

for optimal analytics and monitoring



Communication Module COM.GW.500

The communication module (COM) serves as a gateway for one or more DAT measurement modules.

- Interfaces for transmitting measurement data to higher-level systems
- Local storage of historical data
- Integrated local web user interface for live data and analytics

Power Supply

- 24 V DC or PoE (Power over Ethernet)



Measurement Modules DAT.SA & DAT.KA*

The measurement module (DAT) is available in two versions (DAT.SA & DAT.KA*), both featuring configurable LED indicators and wireless data transmission.

Measurement Data Acquisition

- Current, voltage, power, energy
- Terminal temperature (DAT.KA*)

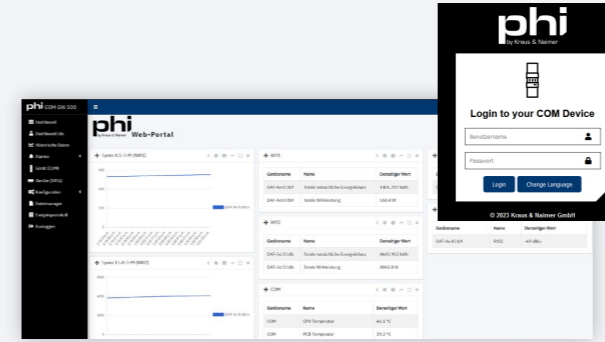
Power Supply

- 100-440 V AC (50/60 Hz)

Measurement Range

- 0-63 A

*The DAT.KA module differs from the DAT.SA in its mounting and is specifically designed for the KA40 and KA63 switches from Kraus & Naimer.



Web User Interface Web UI

The local web user interface is used to display measurement data and configure the COM module and DAT modules.

- Management and setup of alarms when measurement values exceed or fall below thresholds
- Customizable dashboard
- Management and configuration of the COM module and DAT modules
- Visualization of measurement data
- Output of measurement values for current, voltage, power and energy

